



MOUNT LEWIS PARK CONCEPT DESIGN REPORT

MARCH.2019





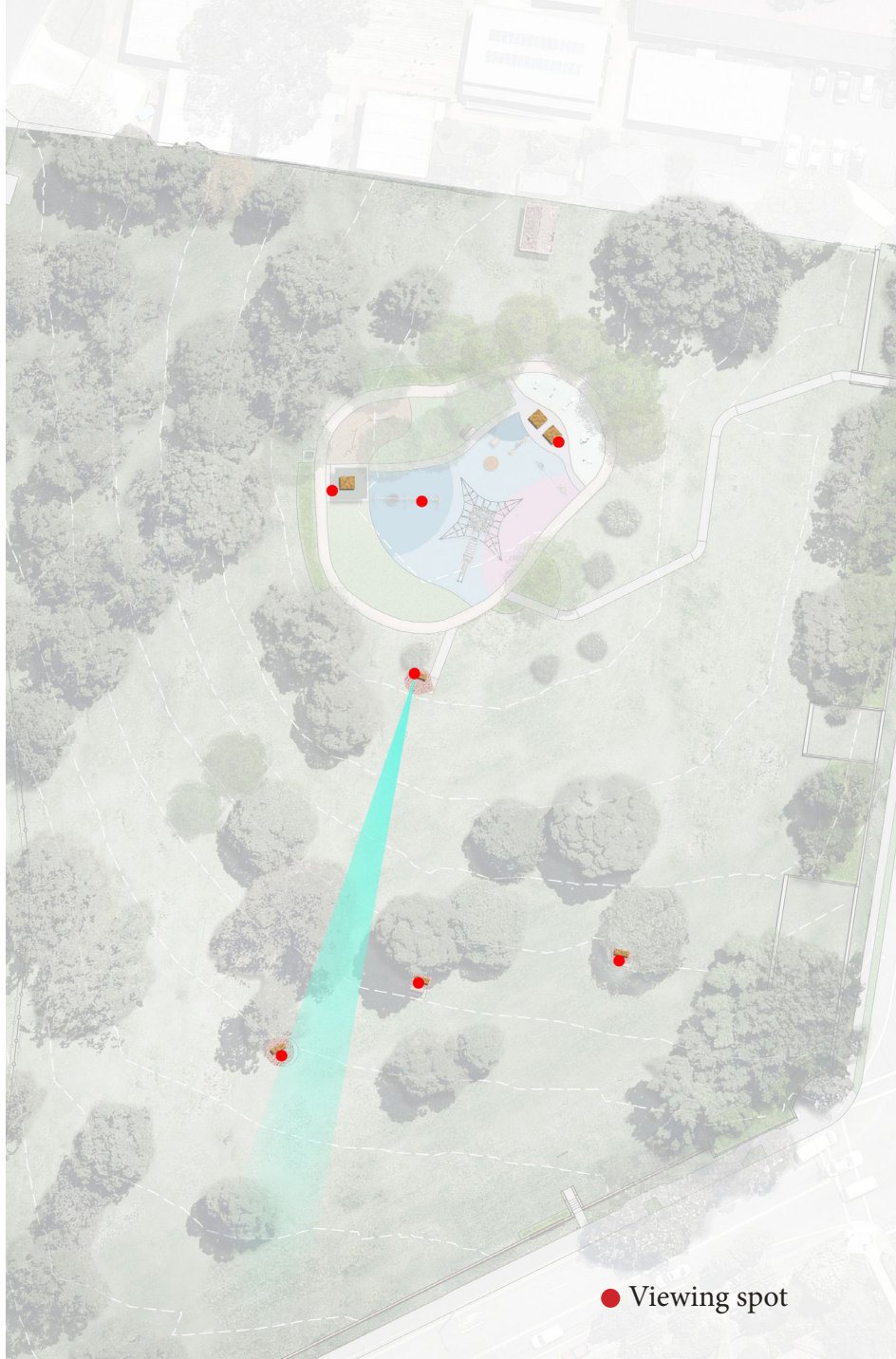
Legend

- 1 New Playground
- 2 Existing Exercise Equipment
- 3 Shelter and Picnic table Set
- 4 Garden bed
- 5 Existing Loop Path
- 6 Shaded Seating with views
- 7 New trees

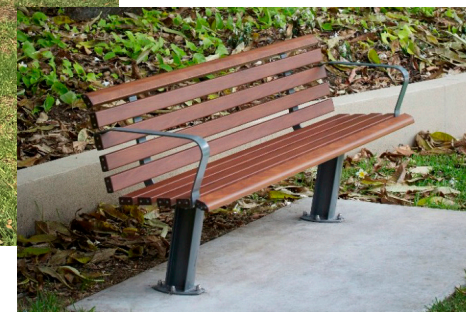
- 8 Entrance (Stairs) with new park signage
- 9 Terraced Lawn
- 10 Accessible Entrance
- 11 Accessible Path to the Playground
- 12 Nature Play(mulch sofffall)
- 13 Existing Bus Stop
- 14 Feature brick Wall
- 15 Low-height concrete retaining wall

Design Strategy: Maximise the view

The Mount Lewis Park enjoys unique topography. The highest point is 13 metres high from the adjacent road. It can oversee as far as Sutherland and the city. Good viewing spots are surveyed and new seating will be installed at these spots.



Future view
while sitting on the seat



New Seat Style

Design Strategy: Maximise the view

New seatings will be installed overlooking these views.



A



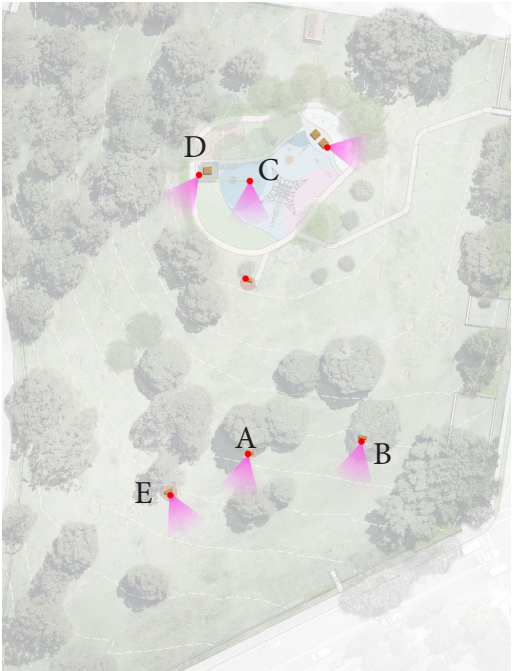
B



C



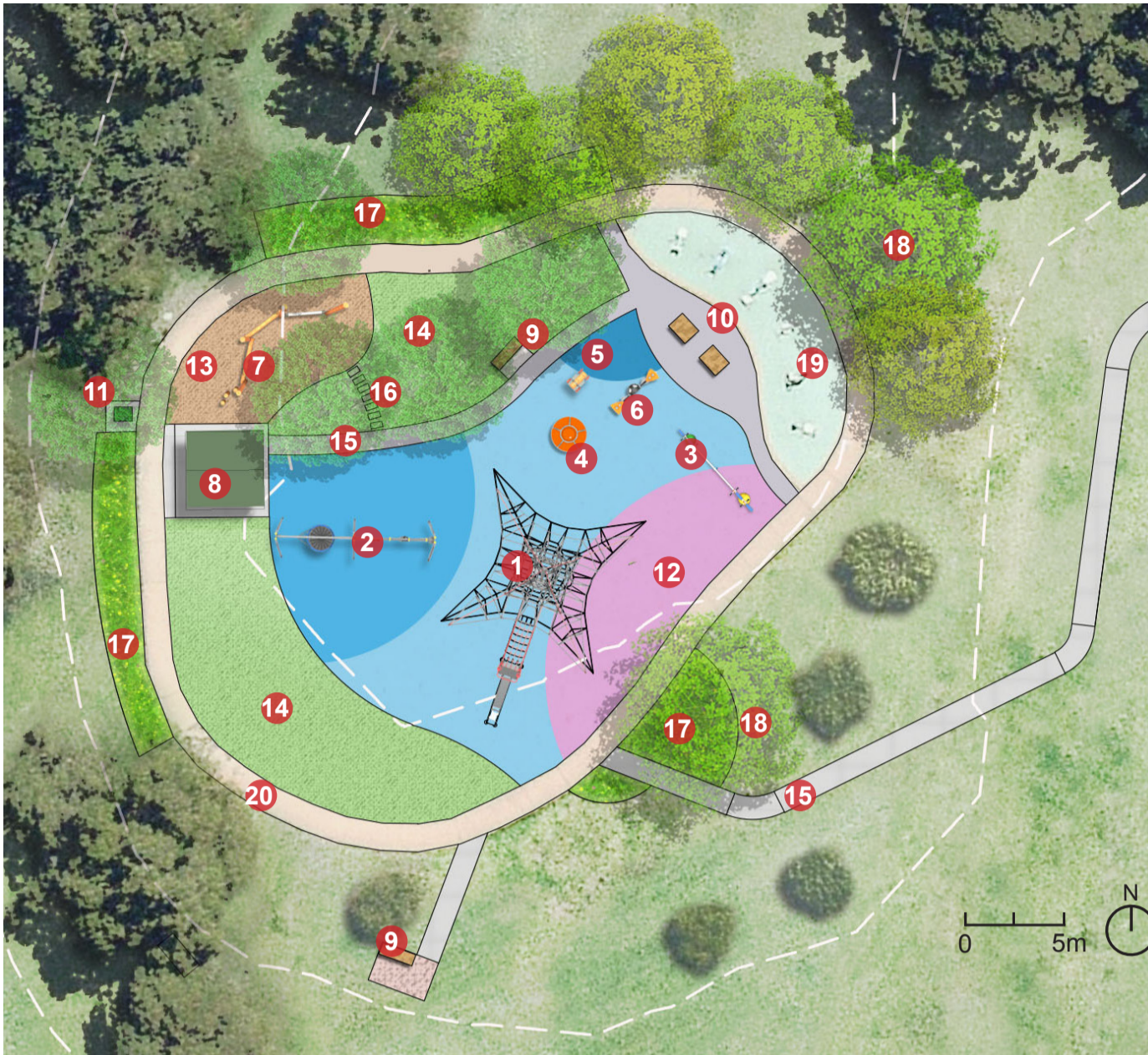
D



E



A hammock chair is proposed.



Furniture

- 8 Shelter and Picnic table
- 9 Seat
- 10 Seat Platform
- 11 Bin Enclosure

Surface

- 12 Rubber Sofffall
- 13 Mulch Sofffall
- 14 Turf
- 15 Concrete Accessible path
- 16 Concrete pavers

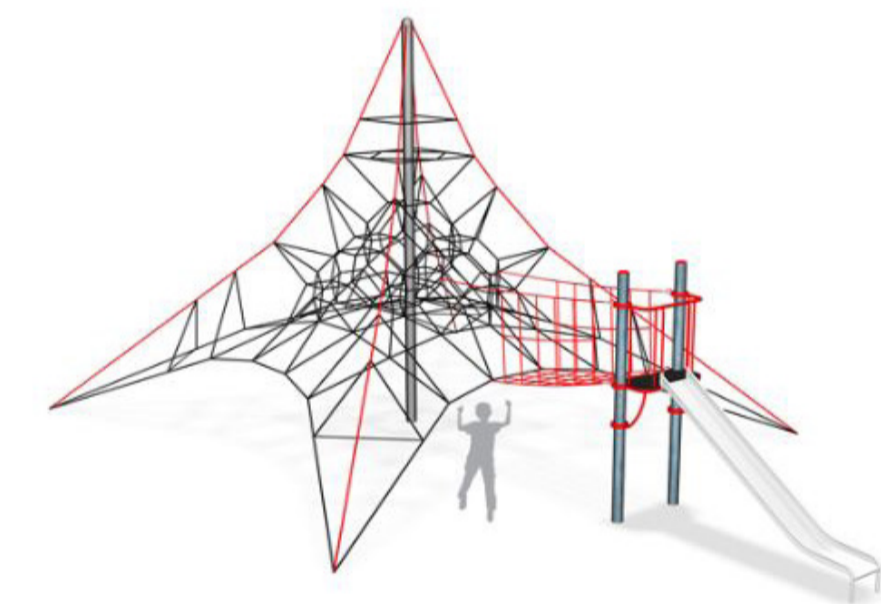
Softscape

- 17 Garden Beds
- 18 New trees

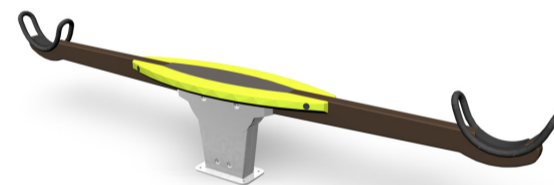
Retain

- 19 Exercise Equipment
- 20 Concrete loop path

Play Equipment



1 Skyclimber



3 Seesaw



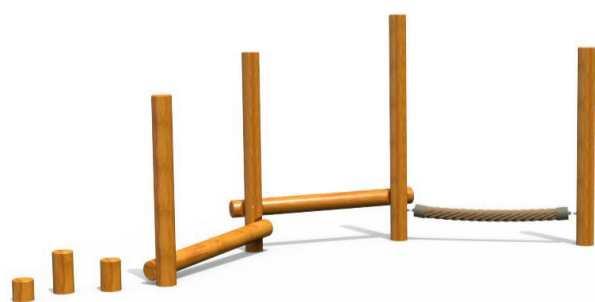
5 Rocker



4 Spinner



6 Mini-swing for toddlers



7 Natural trail



2 Net Combo Swing

Low-height concrete retaining wall

Landscape treatment along Wattle street

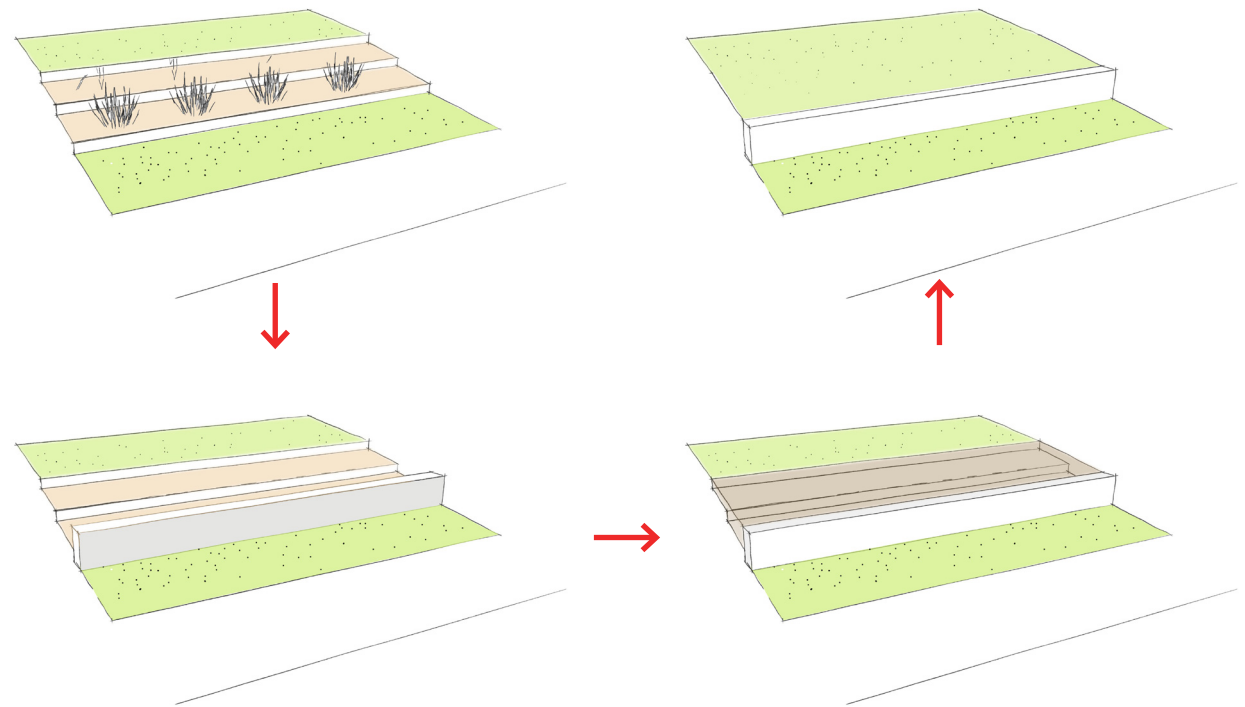


Wattle street is a main road through which people come to the heart of Bankstown. Currently the garden beds are failing and edges of the garden beds are loose and broken, posing tripping hazards. To re-instate the image of the park, a simple wall and continuous lawn to the park is proposed.

The intent of the design is also to invite the views into the park with trees on elegant topography. At the meanwhile, the on-going maintenance is minimum.



Existing garden bed along Wattle street



Landscape treatment along Wattle street



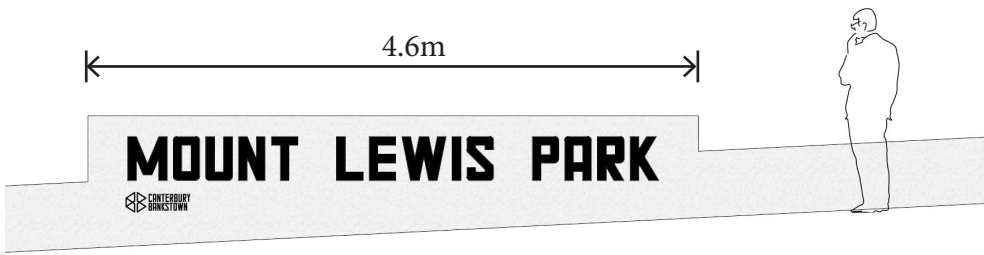
Existing

A new park signage and a new step entrance are also proposed to be built along Wattle Street.

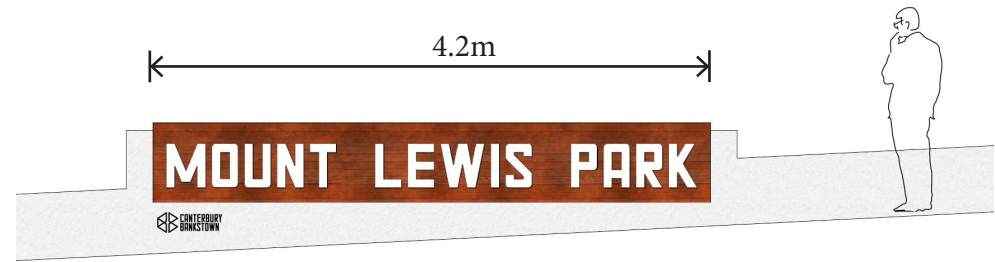
Two accentuated native garden beds will highlight the entrance and corner of Wattle Street and Noble Ave as well as occasionally break the continuous concrete wall and lawn beyond.



Park Signage Design



Option A: Powder-Coated Black Aluminum Sheet on concrete wall



Option B: Powder-Coated White Aluminum Sheet on Timber image sheet



Option B Mocked up perspective